

icobit[®]

WATERPROOFING SYSTEMS



*Ready-to-use,
cold applied,
ponding water
resistant, seamless
waterproofing
membrane in water
dispersion.*

icoper[®]

GENERAL PURPOSE



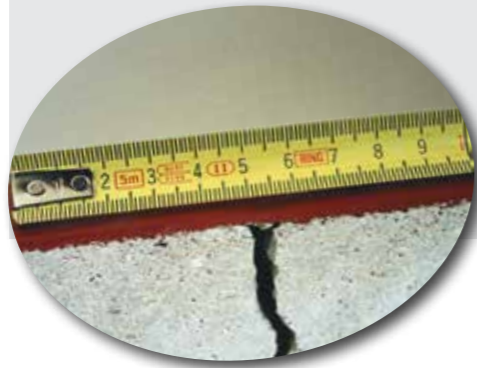


USE

Waterproofing of flat and sloped roofs, fiber cement boards, asphalt, bitumen felts, tiles, metal surfaces, foundation and retaining walls, concrete slabs, terraces, balconies, facades, chimney stacks, gutters, eaves, sheds, PU-foam insulated roofs. Also available in root-resistant version (**icoper-ar**) for planter boxes and roof gardens.

PERFORMANCES

- Ready to use, one component.
- Resistant to ponding water on flat roofs.
- UV resistant (no need for protective paints).
- Eco friendly, safe, free from solvents and other harmful substances.
- Resistant to industrial fumes and aggressive marine environments.
- Walkable for ordinary maintenance.
- Seamless.
- Elastic.
- Able to conform to irregularly shaped substrates.
- Quick, safe and easy to apply.



SURFACE PREPARATION

Clean thoroughly and remove dust, loose material or non-adhering particles, grease, oil, formwork release agents, residue from other treatments and anything that may affect proper adhesion.

The support must be dry. Allow complete drying after water blasting.

Seal floor-wall transitions, control and isolation joints with **icojoint MS** sealant cartridge.

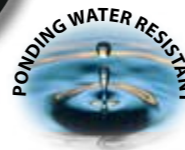
Expansion joints must be treated separately.



EXIT AIR vent pipes are recommended to allow the outgassing of water vapor. If moist is trapped in the support underneath the waterproofing membrane, it evaporates and expands when temperatures rise under the effect of heat and sunlight. When outgassing occurs, it may produce pinholes and blistering in a coating. **EXIT AIR** with its nonwoven flange is a specific accessory designed for liquid waterproofing membranes that helps release vapor easily and safely.



The airless spray application allows for increased productivity: a daily coverage of 800 to 1000 sq.mt. can be easily achieved by 2 operators in 8 working hours.



Concrete slabs – Roofs – Fiber cement boards

Smooth out possible unfinished or hollow areas and repair damaged portions.

Prime with **icoper**® diluted with ½ liter of water per kg. Coverage of the mixture: approx. 5 sq.mt.



Bitumen felts

Clean thoroughly and remove peeled-off protective paints. Restore degraded parts.

Prime smooth felts with **icofiss** applied by brush or roller to dry surface. Spread rate: 75-100 gr/sq.mt.

Prime slated or sanded bitumen felts like concrete above.



Metal surfaces

Clean thoroughly and remove peeled-off protective paints.

Seal the seams preemptively.

Apply a rust converter if needed.

Prime with **icopox pm 102** anti-corrosion coating.

Spread rate: 150 gr/sq.mt.



Wooden surfaces

Clean thoroughly and remove delaminated woodchips. Make sure the surface is sound and dimensionally stable.

Prime with **icofiss**.

Coverage depends on the absorption rate. Reinforce with **icoarm tnt** nonwoven.



APPLICATION INSTRUCTIONS

Apply to fully cured substrates, as moist and subsequent outgassing may result in blistering or delamination.

Wait for the primer to dry (see "Surface Preparation").

Apply minimum two coats, for a total spread rate of no less than 2 kg/sq.mt.

Reinforce with **icoarm** nonwoven where the product is subject to mechanical strain.

Apply consecutive coats in contrasting colors in order to easily check the correct spread rate.

Tools can be cleaned with water while the product is wet.

REMARKS

Apply at temperatures between +5°C and +35°C.

Avoid applying to damp supports and lightweight screeds, or in case of negative thrust.

Do not apply to substrates that may bleed oil. Wait for new bituminous surfaces to fully cure and weather.

Wait for new concrete to fully cure.

Do not apply to supports with underlying concealed waterproofing. In such cases, please contact our Technical Division.

Add vapor vents when needed.

Avoid applying thick layers in one coat.

Possible residual stickiness can be removed by sprinkling talc or cement.

Protect from rain, fog and dew until cured.



TECHNICAL DATA

PRODUCT FEATURE	MEASURING UNIT	MEASURE
Density	gr/ml	1.39
Solid content	%	72.7
Drying time (1)	hrs:min	3:15
Number of coats		min. 2
Coverage per coat	kg/sq.mt.	1.0
Dry film thickness (2 kg/sq.mt.)	mm	1.1 (± 1%)
Viscosity	Pa • s	0.59
Watertightness (2)		passed
Water vapor permeability	μ	8000
Creep resistance (3)	mm	0.3
Tensile strength	MPa	1.0
Tensile elongation	%	190
Fatigue resistance (4)		passed
Cold flexibility	°C	- 20
Delamination at +23°C (specimens subjected to artificial aging at +5°C and +35°C) (5)		
		+ 5° C + 35° C
Concrete	kPa	1237 1364
Tile	kPa	662 600
Asphalt/ Bitumen felts	kPa	333 354
Sheet metal	kPa	1528 1605
Delamination at +23°C (specimens subjected to artificial heat aging in water at +60°C for 30 days) (5)		
Concrete	kPa	2035
Asphalt/ Bitumen felts	kPa	411
Resistance to artificial aging (6)	years	10
Shelf life	months	12

(1) Measured at +23°C with 50% R.H.




(2) Tested in accordance with EOTA TR-003

(3) Tested in accordance with EOTA TR-009

(4) Tested in accordance with EOTA TR-008

(5) Tested in accordance with EOTA TR-004

(6) Tested in accordance with EOTA TR-010

COLORS		
<i>Standard (Std)</i>	<i>Plus</i>	<i>Extra</i>
		

STORAGE

- Store in a covered, dry area.
- Keep containers tightly closed.
- Do not expose to temperatures below freezing or exceeding +50°C

The manufacturer reserves the right to amend the product specifications without notice.

The above performances were measured according to the standards in force at the time of issue and represent the average results of our tests.

Although highly reliable, they do not construe a binding commitment nor liability for Icobit Italia S.r.l.

The purchaser and the end consumer acknowledge responsibility for the product suitability to the intended use.

PACKAGE



1 • 5 • 10 • 20 Kg
(2.2 • 11 • 22 • 44 lbs.)

Application Methods



Roller



Brush



Airless Spray

TDS icoper 1015